

Port Pirie & Yorke & Mid North Circular Economy Opportunities

Information &
Networking Session -
Presentation Slides



Welcome & Agenda

5:30 pm — Welcome & Housekeeping,

Muriel, RDA YMN

5:35 pm — GISA: Circular Collaboration

Nicole Gschwind, GISA

5:45 pm — Circular Economy & Regional Opportunities

Mark & Jarvis, Rawtec

6:15 pm — Council Perspective

Chris Davey, Port Pirie Regional Council

6:25-6:40 pm — Reflections & Circular Economy Initiative

Development Program

Jarvis & Meg, Rawtec

6:45-7:30 pm — Close, followed by Networking



Acknowledgement of Country



Regional Development Australia Yorke and Mid North, Rawtec, and Green Industries SA acknowledge the Traditional Owners of the land on which we meet today and pay our respects to Elders past and present.

RDA Yorke and Mid North

Regional Development Australia Yorke and Mid North (RDAYMN) is a not-for-profit organisation funded by Federal, State and Local Governments.

Our purpose

Facilitate growth in economic prosperity within our region and improve the liveability of our communities

Our vision

Leverage our regional advantages to deliver and grow a resilient, attractive and secure future

Our partners

- 11 Local Governments
- State Government
- Federal Government
- Businesses
- Community groups
- Individuals

The Circular Economy Project

Opportunity for the whole of Yorke & Mid
North region

Application for LEAP Program

Collaboration with GISA and Rawtec

Information available on RDA Yorke and Mid
North website



Nicole Gschwind | Senior Adviser

Business Sustainability Program

Green Industries SA



Government of South Australia
Green Industries SA

GISA Business Sustainability Program

GISA is the state government agency leading South Australia's transition to a circular economy.

The Business Sustainability Program provides tailored support to help businesses and industry sectors:

- Enhance waste management and recovery.
- Adopt circular economy business models.
- Build capability through collaboration and shared learning.

Funding Programs:

Lead-Educate-Assist-Promote (LEAP) Grant

- LEAP Grants support industry sectors, business groups, and supply chains to drive a more resource efficient, sustainable and circular economy for SA.
- The Circular Economy Initiative Program is funded through the RDA Yorke & Mid North LEAP Grant.

Assess-Implement-Monitor (AIM) Grant

AIM grants help cover the cost of expert advisory services to assess a business's environmental sustainability performance and develop tailored recommendations or a business case for investing in more sustainable and circular practices.

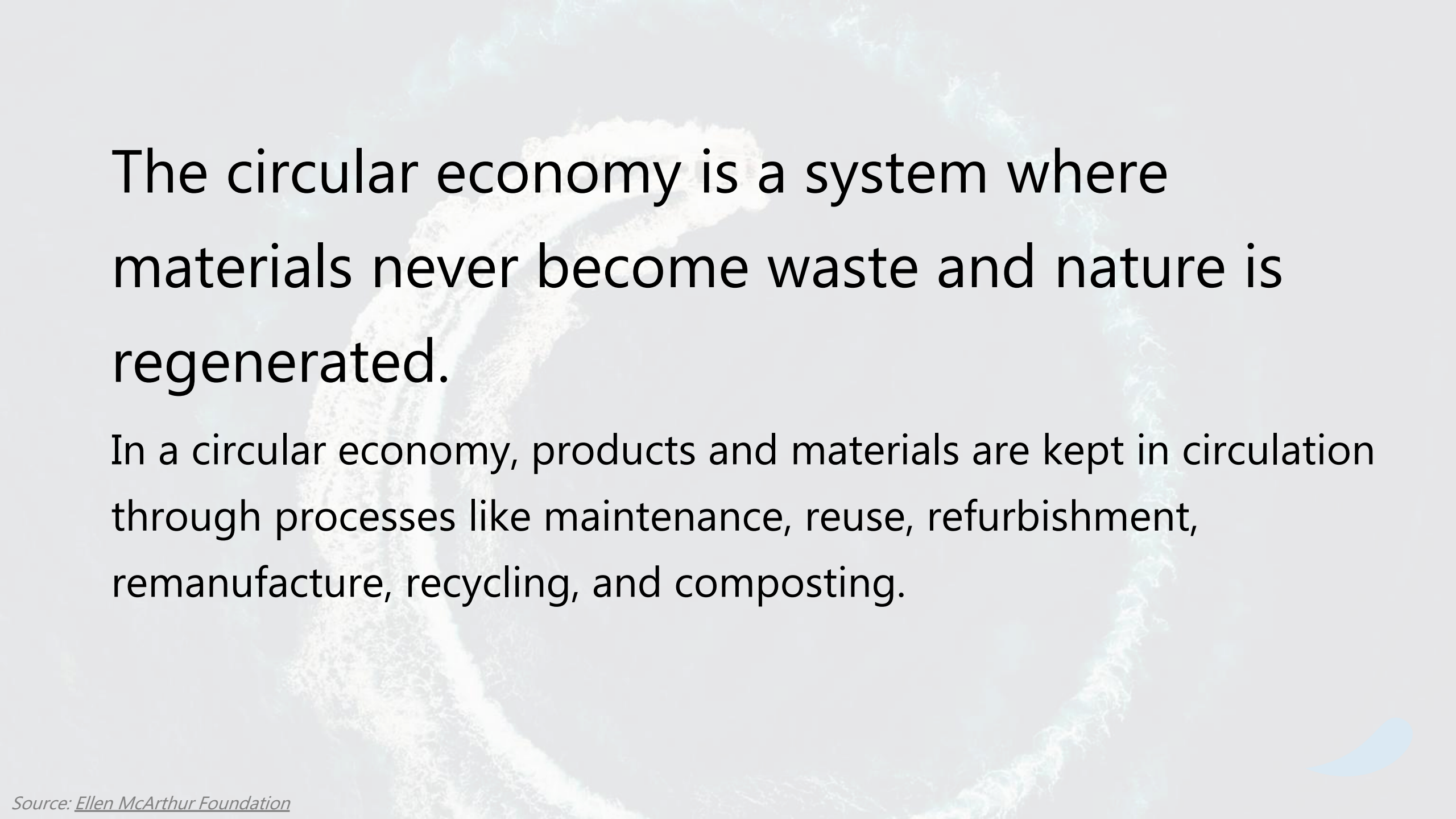




What is the Circular Economy?

Mark Rawson, Rawtec





The circular economy is a system where materials never become waste and nature is regenerated.

In a circular economy, products and materials are kept in circulation through processes like maintenance, reuse, refurbishment, remanufacture, recycling, and composting.

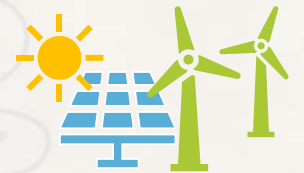
Principles of the circular economy

1. Design out waste and pollution

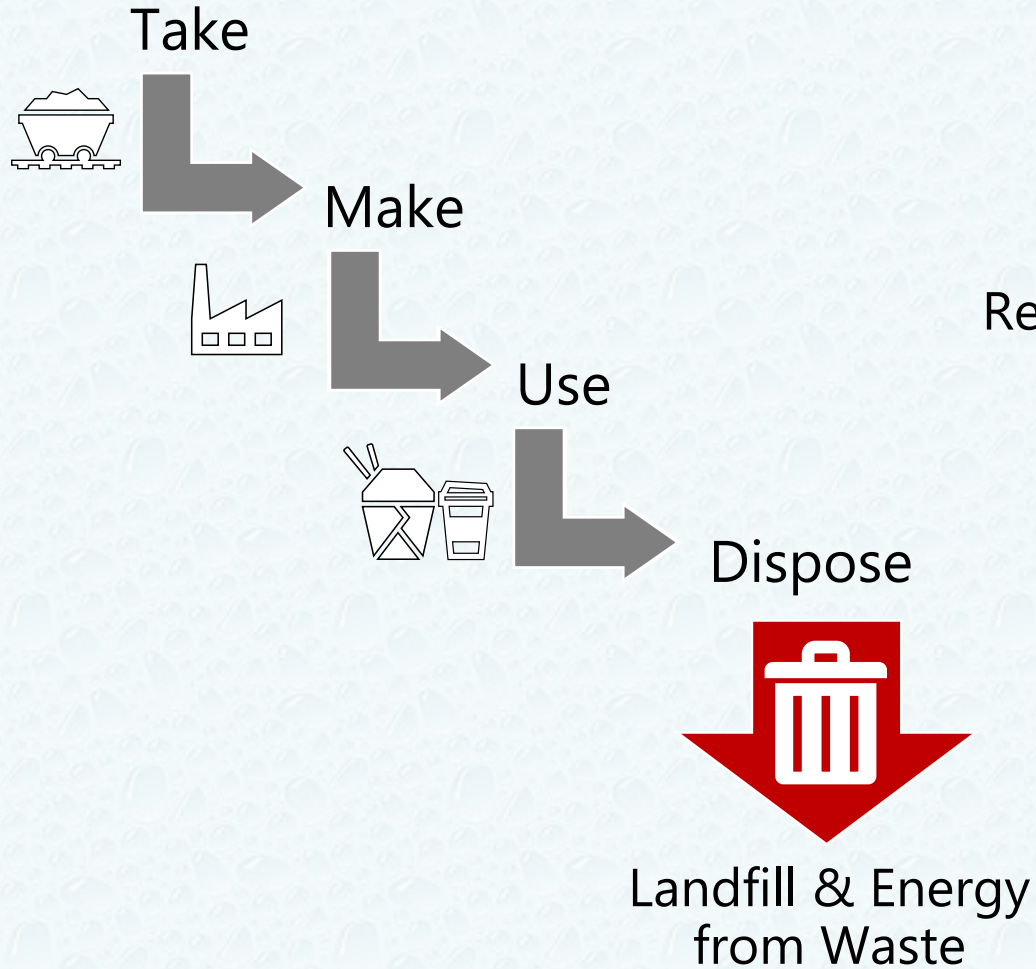
2. Keep products and materials in use at their highest value

3. Conserve natural resources and regenerate nature

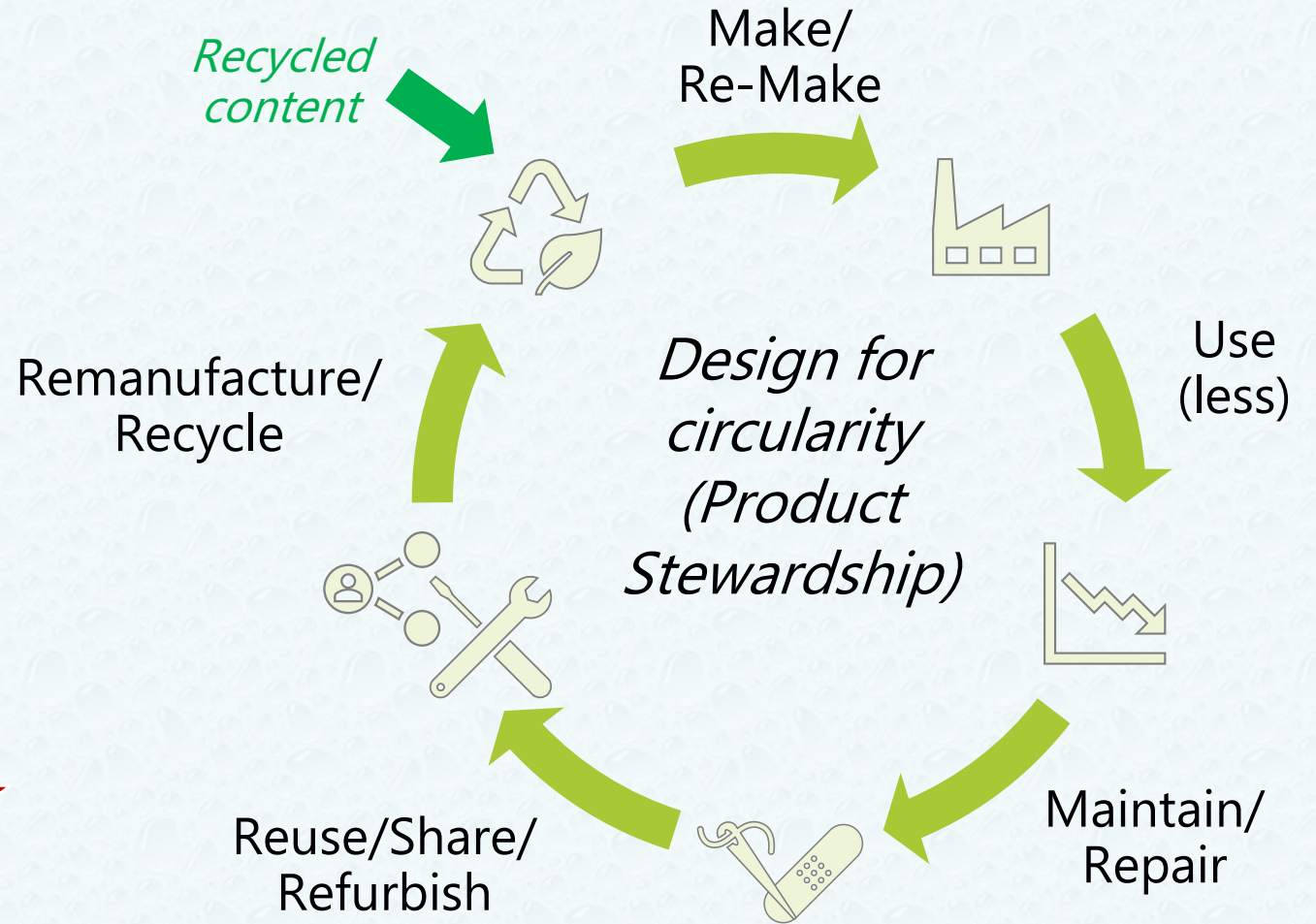
A circular economy is also underpinned by renewable energy



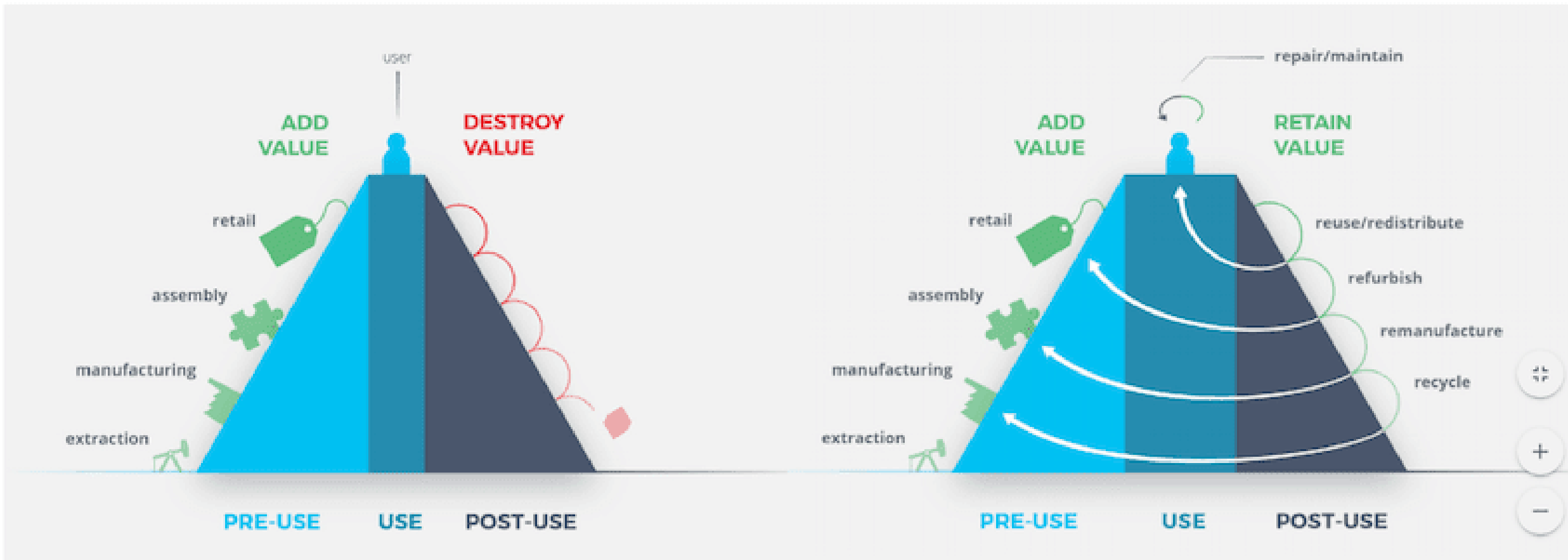
Linear economy



Circular economy



Why It Matters (Benefits)



Benefits of a circular economy for your community

- ✓ Waste reduction
- ✓ Cost savings
- ✓ Reduces dependence on virgin materials
- ✓ Reduces environment impact
- ✓ Job creation
- ✓ Strengthens the local economy and communities
- ✓ Encourages innovation and collaboration

Circular business models



Circular
supplies

Product as
a service

Sharing
platforms

Product life
extension

Resource
recovery



Regional circular economy: Bega Valley, NSW

← Linear Economy
Vision for The Future →

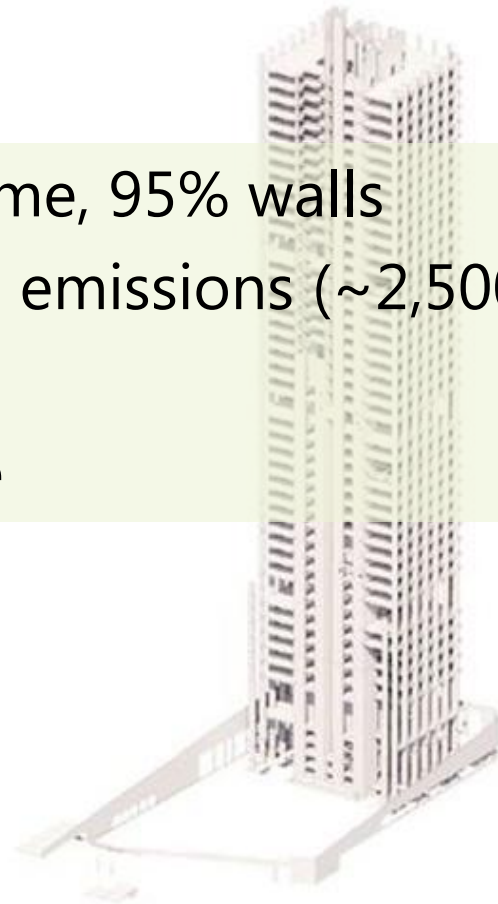
Welcome
TO THE WORLD'S MOST
CIRCULAR VALLEY
"Nourishing the Past - Embracing the Future"

Reuse, repurpose, retrofit, repair: Quay Quarter Tower

- ✓ Retained 66% structural frame, 95% walls
- ✓ Avoided 12,000 tonnes CO₂ emissions (~2,500 cars)
- ✓ Saved \$130 million
- ✓ 12 months faster build time



Demolished structure



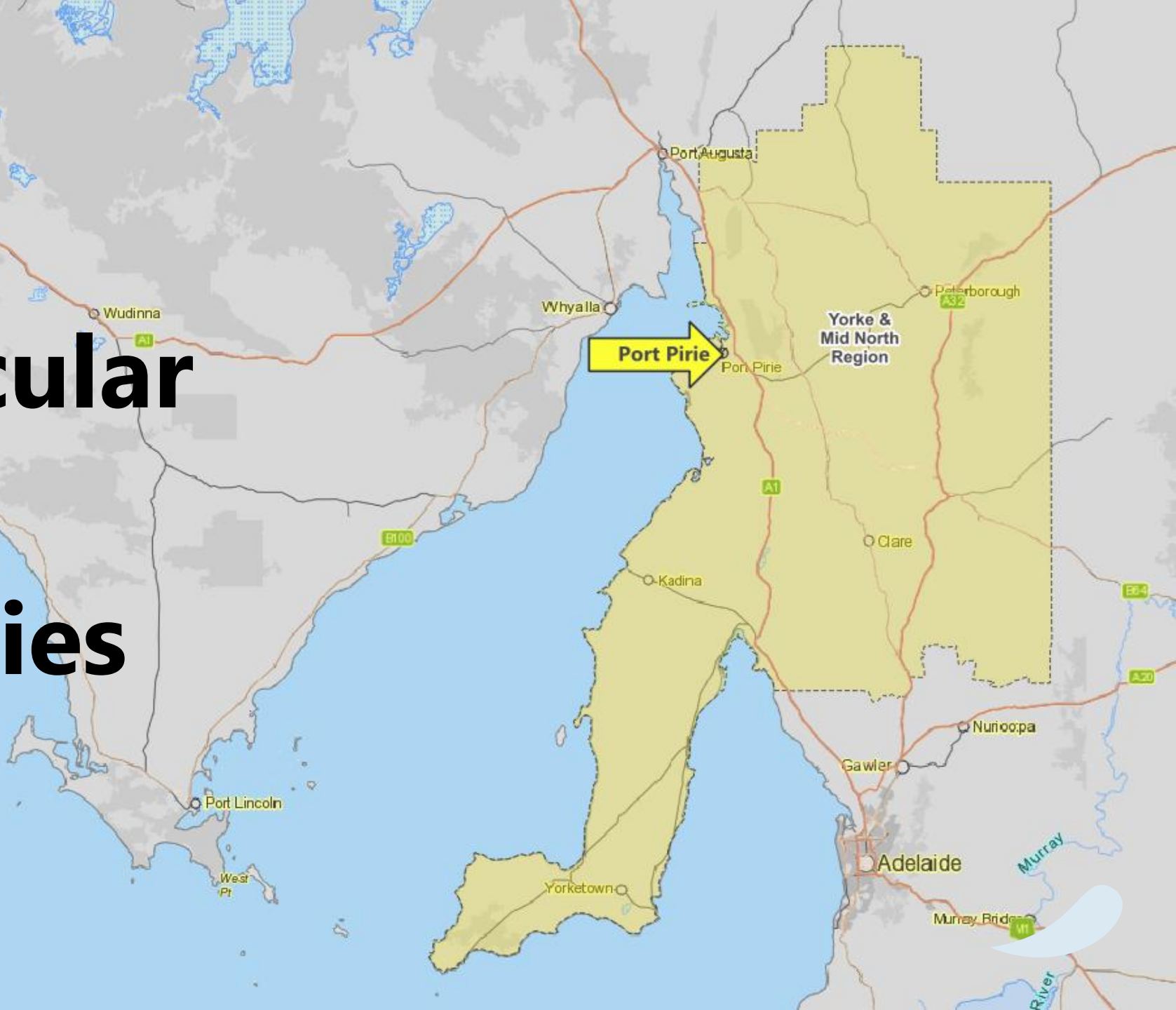
Retained structure



New structure

Region circular economy opportunities

Jarvis Webb, Rawtec



Opportunity sectors



Renewable
energy



Mining



Agriculture



Industry



Opportunity activities



Internal improvements



Refurbishment



Repair/maintenance



Re-manufacturing



Processing/Recycling



Alternative fuels production

Renewable energy CE opportunities

- Processing/recycling of end-of-life:
 - [Wind turbine blades](#)
 - [Batteries](#)
 - [Solar panels](#)
 - [Other equipment & E-waste.](#)
- Testing, reuse, repair and remanufacturing of equipment.



Image Source: *C&EN News*

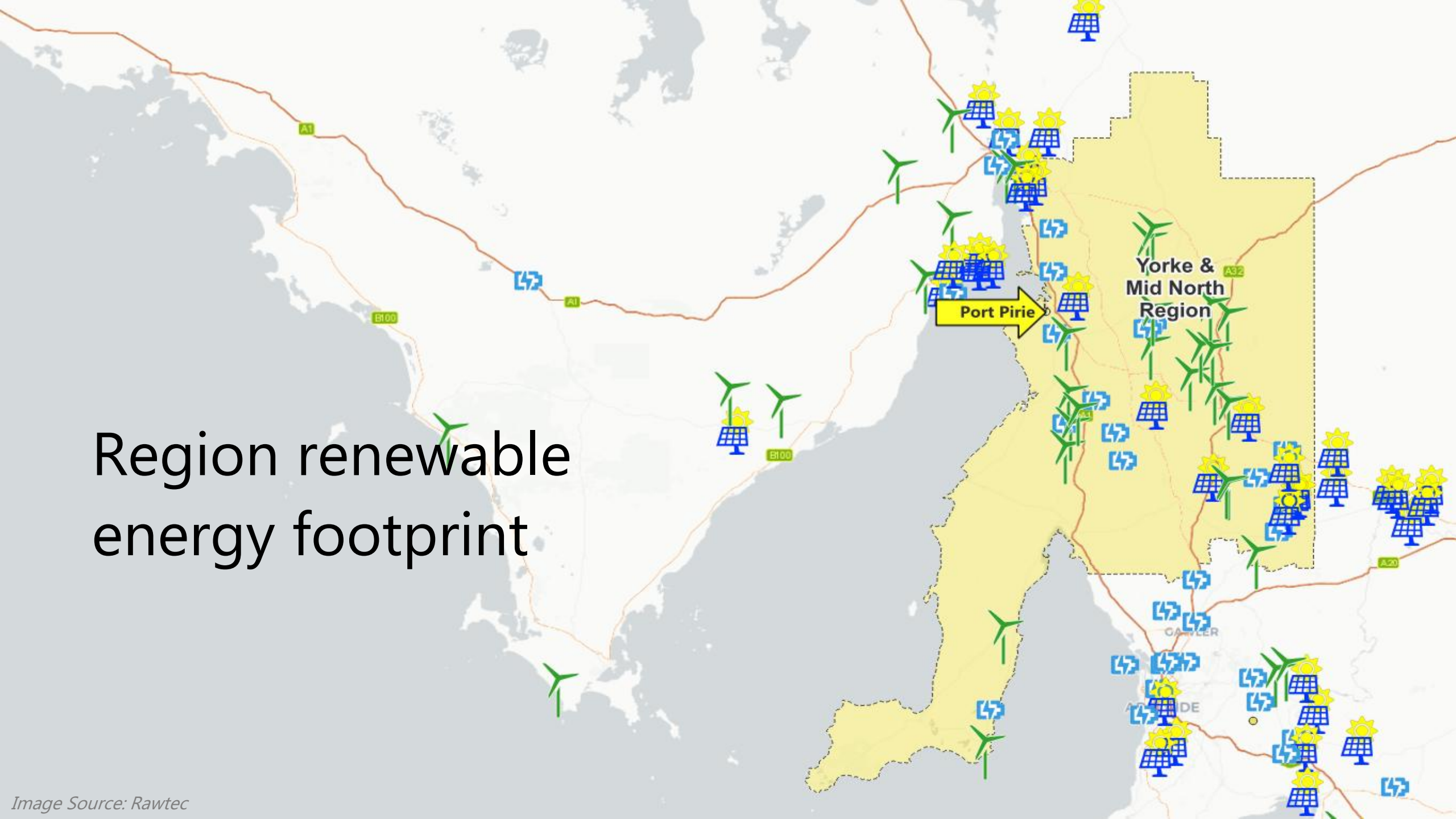


Image Source: *The EV Report*



Image Source: *Renew Economy*

Region renewable energy footprint



Mining sector CE opportunities

- [Mining tyre retreading](#)
- Repair & Remanufacturing:
 - [EV vehicles \(e.g. underground\)](#)
 - *microgrid infrastructure.*
- Processing of end-of-life waste
 - [HDPE pipe \(grinding/reprocessing\)](#)
 - [Mining tyres \(cutting/shredding\)](#)
 - [Conveyor belts \(cutting/shredding\)](#)



Region mining sector footprint



Other region circular economy opportunities

- Processing/recycling:
 - *Ag plastics (e.g. bulka bags, silage wrap, irrigation, chemical drums).*
 - *Commercial, industrial, or construction/demolition waste (e.g. scrap metal, concrete, glass).*
- Waste-to-fuel development:
 - *Processed engineered fuel (PEF) from commercial & industrial waste.*
 - *Tyre derived fuel (TDF).*



What does the region have to offer?

- Large, skilled workforce.
- Lower cost industrial/commercial land (compared to metro).
- Productive agriculture areas.
- Large energy users (e.g. Nyrstar).
- Highway access to industrial areas.
- Rail access to Adelaide, WA, NT, and NSW
- Ports (including deep water)
- Large established resource recovery sites with room for development:
 - [Port Pirie Transfer Station](#)
 - [Copper Coast Resource Recovery Centre](#)



An aerial photograph of Port Pirie, South Australia. The image shows a coastal town with a large body of water (Port Pirie Harbour) in the background. A prominent, tall, white industrial chimney stands on the left side of the town. The foreground features a large green oval-shaped field, likely a sports ground, surrounded by residential and commercial buildings. The sky is clear and blue.

Port Pirie Regional Council

Chris Davey, Port Pirie Regional Council

About the Council & region

- Population of ~18,000
- ~8,900 residential premises
- Key industries, including smelting, manufacturing, transport, agriculture, tourism
- Kerbside 3 bin service.
- Port Pirie Transfer Station & Crystal Brook Transfer Station
- Other services, including street sweeping, Illegal dumping removal.
- Community governance & planning
- Roads, footpaths & public infrastructure
- Parks, gardens, & recreation facilities
- Libraries & learning programs
- Arts, culture & community events
- Community wellbeing & support programs
- Economic development & tourism promotion

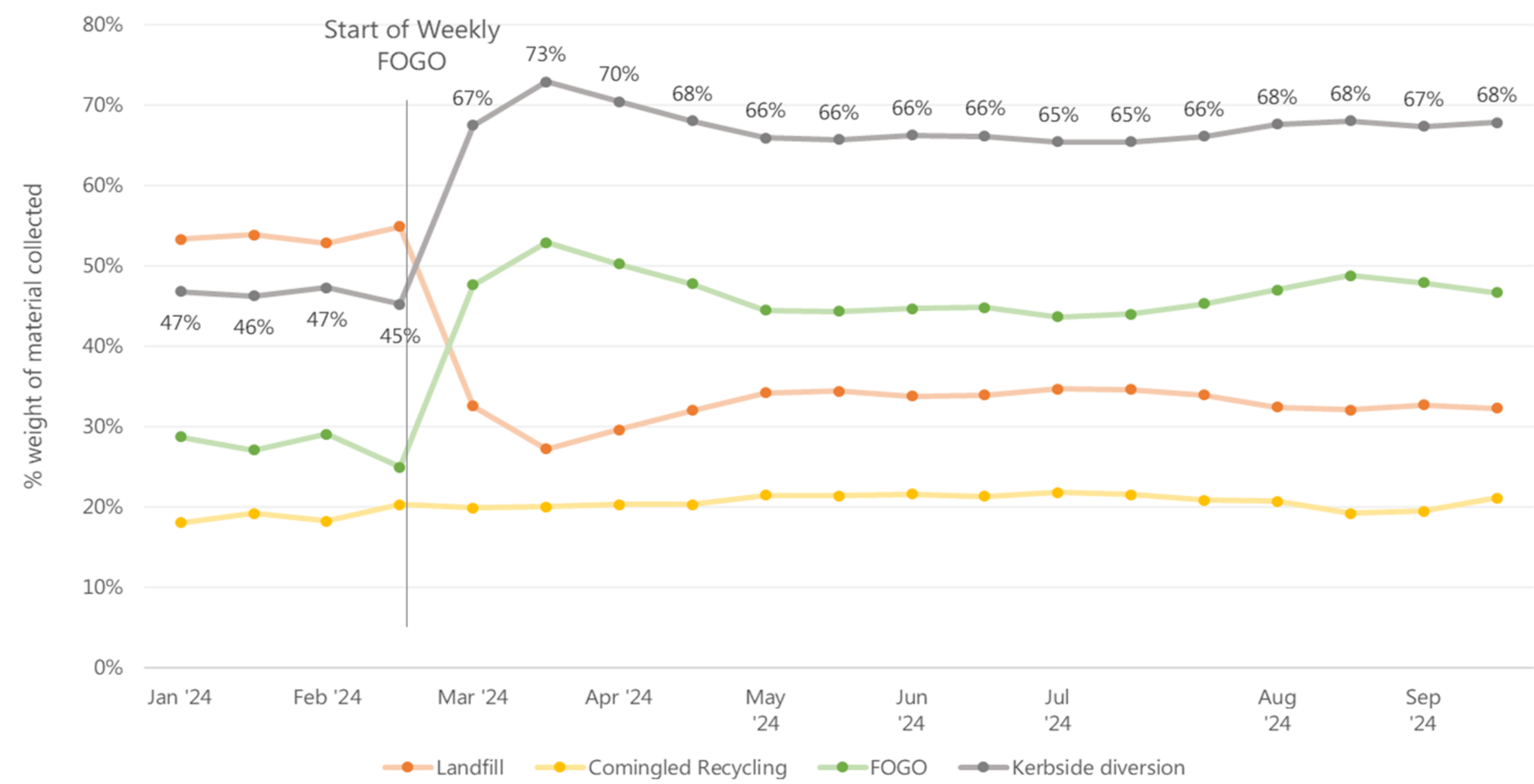


Port Pirie Transfer Station

- Built ~2012 to replace local landfill
- Total area approx. 8 hectares
- 18 – 26 TS tonnes received per annum, 67% diverted from landfill.
- Efficient lay out with opportunities for source separation.
- Strategic facility for the region.
- Land suitable for development
- Could provide greater waste/resource recovery services for the region.



Port Pirie Weekly FOGO Transition - Kerbside material collected and diversion (% weight)





The Circular Economy Initiative Development Program

Meg Ellis, Rawtec

What is the Circular Economy Initiative Development Program?

- In collaboration with Regional Development Australia Yorke & Mid North, and Green Industries SA.
- Supporting businesses on a circular initiative of their choosing within the Yorke & Mid North region.
- Consultation support valued at over \$9,000, provided to each business.



What is involved in the program?

The program is designed around **three collaborative workshops** that will include:

1. Exploring your initiative

2. Refining your initiative


3. Next steps & pathways

What types of initiatives?

Your chosen initiative could be:

- Circular economy opportunity within your organisation.
- New market
- New service
- Building on an existing initiative
- Collaboration between multiple business/organisations.

This could include (but isn't limited to):

- Waste reduction & circular economy initiatives within a business/organisation.
 - Recycling end-of-life renewable energy infrastructure (e.g. wind turbines, solar panels, batteries, equipment).
 - Recycling solutions or the use of recycled content in new products.
 - Mining-related opportunities (e.g. tyre reuse/recycling, equipment refurbishment).
 - Business-to-business models & local circular hubs that create value from existing resources.
- 

Why Rawtec?



Experience working in Port Pirie and Yorke and Mid North region.

- Projects include:
 - Port Pirie Transfer Station Feasibility Studies
 - Waste & Resource Recovery Strategy



Experience from similar projects and LEAP grants.

- Including:
 - Business Victor Harbor, Circular business program
 - City of Marion, Circular business program



Providing advice on waste and the circular economy since 2007.

We regularly work with businesses, governments, councils, planners, architects, and the not-for-profit sector to advance Australia's transition towards a circular economy.

How to apply?

This is your chance to shape the future of the region.

If you and your business would like to apply, please fill out an expression of interest using the QR code (<https://www.surveymonkey.com/r/RJ2CLJX>)

Summary of information on the sheet provided.

Applications will be closing on the 13th of October 2025.

For any questions about the program, please contact Rawtec consultants

- Jarvis Webb (Jarvis.webb@rawtec.com.au)
- Meg Ellis (meg.ellis@rawtec.com.au).



Thank you &
Questions



Site Tour Photos





Site tour photo



Site tour photo

Image Source: Rawtec



Site tour photo

Image Source: Rawtec



Recycled C&D into
on-site road base



Site tour photos

Port Pirie Transfer Station Photos





Image Source: Port Pirie Regional Council



Entrance road



Area for council materials, standpipe located on site

Vacant area – potential for use



Sites currently leased to Scouts and Veolia





**WEIGHBRIDGE
ONE VEHICLE
AT A TIME**

**DOOR
1**

EMAC

**NO
SMOKING**

Image Source: Port Pirie Regional Council



Inside of shed showing bays for FOGO, recycling, waste and skip bins for steel, cardboard etc.





Oil disposal, E-waste, mattresses, batteries and globes



Load out area



Hardstand area and
drum muster collection



Back area of site for mulch,
tyres, green waste









Image Source: Port Pirie Regional Council



Image Source: Port Pirie Regional Council

